

*SYDNEY DANCE COMPANY
IN GRAEME MURPHY'S*

DEADLY SINS AT KINSELAS

<i>Concept, Direction and Choreography</i>	GRAEME MURPHY with JANET VERNON
<i>Set Design</i>	ROBERT DEIN
<i>Costume Design</i>	ANTHONY JONES
<i>Lighting Design</i>	JOHN MONTGOMERY
<i>Stage Manager</i>	FRANCES MACKEN
<i>Live Music Co-ordinator</i>	MAX LAMBERT
<i>Costume Supervisor</i>	JENNIFER IRWIN
<i>Script</i>	LANCE CURTIS
<i>Wardrobe Assistant</i>	JUDI PARKER

Colin Brumby's *The Phoenix and the Turtle* played by
THE AUSTRALIAN CHAMBER ORCHESTRA
Conducted by STUART CHALLENGER

The Sydney Dance Company gratefully acknowledges the assistance of
KOLATEX HOSIERY PRODUCTS and LIFEGUARD MARLIN PTY. LTD. in the
presentation of *Deadly Sins at Kinselas*.

"In this production of *Deadly Sins* the members of the Company have not only
generously revealed their sinfulness but have contributed creatively in what has
been our most collaborative venture to date".

Graeme Murphy

GRAEME MURPHY

ARTISTIC DIRECTOR

JANET VERNON

ASSISTANT DIRECTOR

Graeme Murphy is now considered to be the most important Australian choreographer of his generation. 1984 marks the eighth year of his direction of the Sydney Dance Company, assisted by Janet Vernon. Together they have contributed enormously to the renewed interest in dance in this country and the flow of original works they have produced have become the object of enormous national pride. Graeme Murphy and Janet Vernon are renowned for their encouragement of Australian artists in the fields of choreography, set and costume design and music composition. *Deadly Sins* is the second work produced for Kinselas, following the success of *Flashbacks* in 1983. In November/December this year Graeme and Janet will direct a major two programme season at the Sydney Opera House featuring two new works by Graeme Murphy.



SYDNEY DANCE COMPANY

<i>Artistic Director</i>	GRAEME MURPHY A.M.	<i>Administrator</i>	GREGORY SPICE
<i>Assistant Director</i>	JANET VERNON	<i>Deputy</i>	
<i>Ballet Master</i>	ROBERT OLUP	<i>Administrator</i>	PETER HERZSTEIN
<i>Assistant</i>		<i>Publicist</i>	JANINE KYLE
<i>Ballet Master</i>	BILL PENGELLY	<i>Secretary</i>	MEREDITH MAISSONEUVE
		<i>Photography</i>	BRANCO GAICA

BOARD OF DIRECTORS

<i>Chairman</i>	GRAEME GALT	<i>Deputy Chairman</i>	DR. KENNETH MCKINNON
	RENA BARNUM		GERALDINE PATON
			GARY PENNY
	JEREMY WRIGHT		JAMES YONGE

The Sydney Dance Company acknowledges assistance from the following:
The Theatre and Music Boards of the Australia Council — A Statutory Body of the Commonwealth Government;
The New South Wales Government through the Premier's Department, Division of Cultural Activities

Esso Australia Limited; Sydney Dance Company Friends;
Time-Life International (Aust) Pty. Ltd.;
and

Wang Computer Pty. Ltd.

Wardley Australia Limited



ROBERT DEIN

SET DESIGN

Robert Dein spent several years designing in England which included the London fringe's *Almost Free* and *Open Space* Theatres, Repertory Theatres at Watford and Liverpool and *The National* and *Royal Court* Theatres. Since returning to Sydney he has worked as Art Director of three feature films, the most recent being the soon to be released *Street Heroes*. This is his first design for ballet.



ANTHONY JONES

COSTUME DESIGN

Anthony Jones studied fine art and fashion design at the Royal Melbourne Institute of Technology followed by two years as a fashion designer in Melbourne. His work in the film industry commenced as a Wardrobe Assistant on *Gallipoli* followed by assignments as Assistant Costume Designer for *Heatwave*, *Starstruck* and *The Year of Living Dangerously*. In 1982 he was Costume Co-ordinator for the film *Undercover* followed soon after by work as a Costume Designer in his own right on two new films — *The City's Edge* and *The Disappearance of Azaria Chamberlain*.

His innate understanding of ballet costumes was revealed in his first collaboration with Graeme Murphy on *Some Rooms*. *Deadly Sins* is Anthony's second commission for the Sydney Dance Company.



JOHN MONTGOMERY

LIGHTING DESIGNER

FRANCES MACKEN

STAGE MANAGER

JENNIFER IRWIN

COSTUME SUPERVISOR (far left)



ADRIAN BATCHELOR



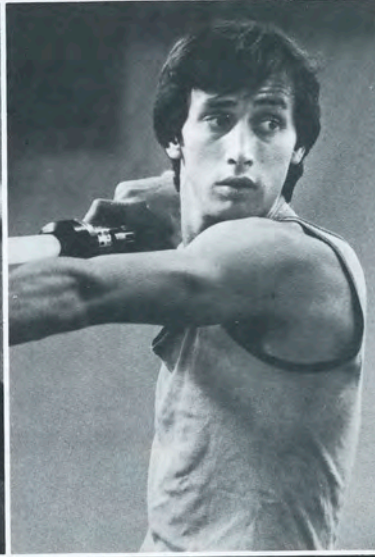
JENNIFER BARRY



SHANE CARROLL



LOUISE DOWLING



NEIL GRIGG



MICHAEL HENNESSY



TONIA KELLY



JOSEPHINE MEAGHER



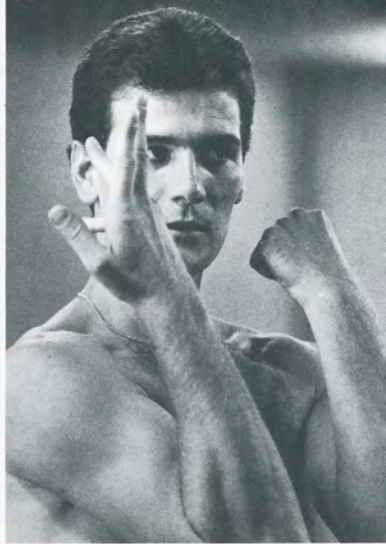
PAUL MERCURIO



ROBERT OLUP



BILL PENGELLY



ROSS PHILIP



FRANCOISE PHILIPBERT



NINA VERETENNIKOVA



KIM WALKER



ALFRED WILLIAMS

LUST

PRiDE

DEADLY SINS

*Sin and fun have always been inextricably linked.
Deadly Sins explores this concept and its consequences right here in 'sin city'.
Welcome Sinners!!*

ACT ONE

THE SINS

<i>Opening — The Passers By — The Box Office — The Restaurant</i>	HARMONICA FLASH	
<i>Lust</i>	JULIET OF THE SPIRITS	Francoise Dompierre Nino Rota
<i>The Pride Tango</i>	BOTOFAGO from Brazilian Suite	Darius Milhaud
<i>The Bankcard Song</i>	Written by Lambert/Curtis/Mozart	
<i>The Distorting Mirror — Narcissus — The Mens' Room — The Ladies' Room — The Upstairs Bar</i>	JULIET OF THE SPIRITS	Nino Rota
<i>I Love You</i>	TICK TOCK from COMPANY	Stephen Sondheim
<i>Francoise's Song</i>	I DON'T LOVE YOU	Kurt Weill
<i>Sloth Dancing</i>	JULIET OF THE SPIRITS	Nino Rota
<i>Maitre D.'s Song</i>	END OF A PERFECT DAY	G Jacobs-Bond (Sung by Frank Patterson)
<i>The Staff Kickline</i>	JULIET OF THE SPIRITS	Nino Rota

INTERVAL

ACT TWO

THE CONSEQUENCES

<i>Purgatory</i>	THE PHOENIX AND THE TURTLE	Colin Brumby
	played by THE AUSTRALIAN CHAMBER ORCHESTRA	Conducted by Stuart Challender
<i>Heaven</i>	GLORIA 4th and 5th Movements	Francis Poulenc
<i>Hell</i>	DR. MABUSE Propaganda	

Kinselas Productions

General Manager
VIVIENNE READ

Administration
SUE MANNING

Production Manager
IAN MATTHEWS

Sound Engineer
ADAM HUIE

Artistic Director
IAN TASKER

Theatre Manager
GARY TATHAM

Stage Manager
PETER NUEFELD

Follow Spot
NICK PECK

Promotions
MAGGIE REID

Directors:
LEON FINK
TONY BILSON

Publicity:
INGRID BERG
Phone: 660 1433

Zerba™
the Buddha
RAJNEESH
RESTAURANT



2 Flinders St
Taylor Square
Darlinghurst
For bookings phone: 3576363
Open Tues — Sun 6 pm–11 pm

For the finest in vegetarian cuisine,
the zaniest of cocktails
and the most exquisitely
mouthwatering desserts.
THIS IS THE PLACE.

For the most delicious healthy
snacks, light meals, juices,
smoothies, coffee and cake,
EAT IN OR TAKE AWAY AT
THE NEW

Zerba™
the Buddha
RAJNEESH
CAFE



268 Oxford St
Paddington
Open 7 days a week

